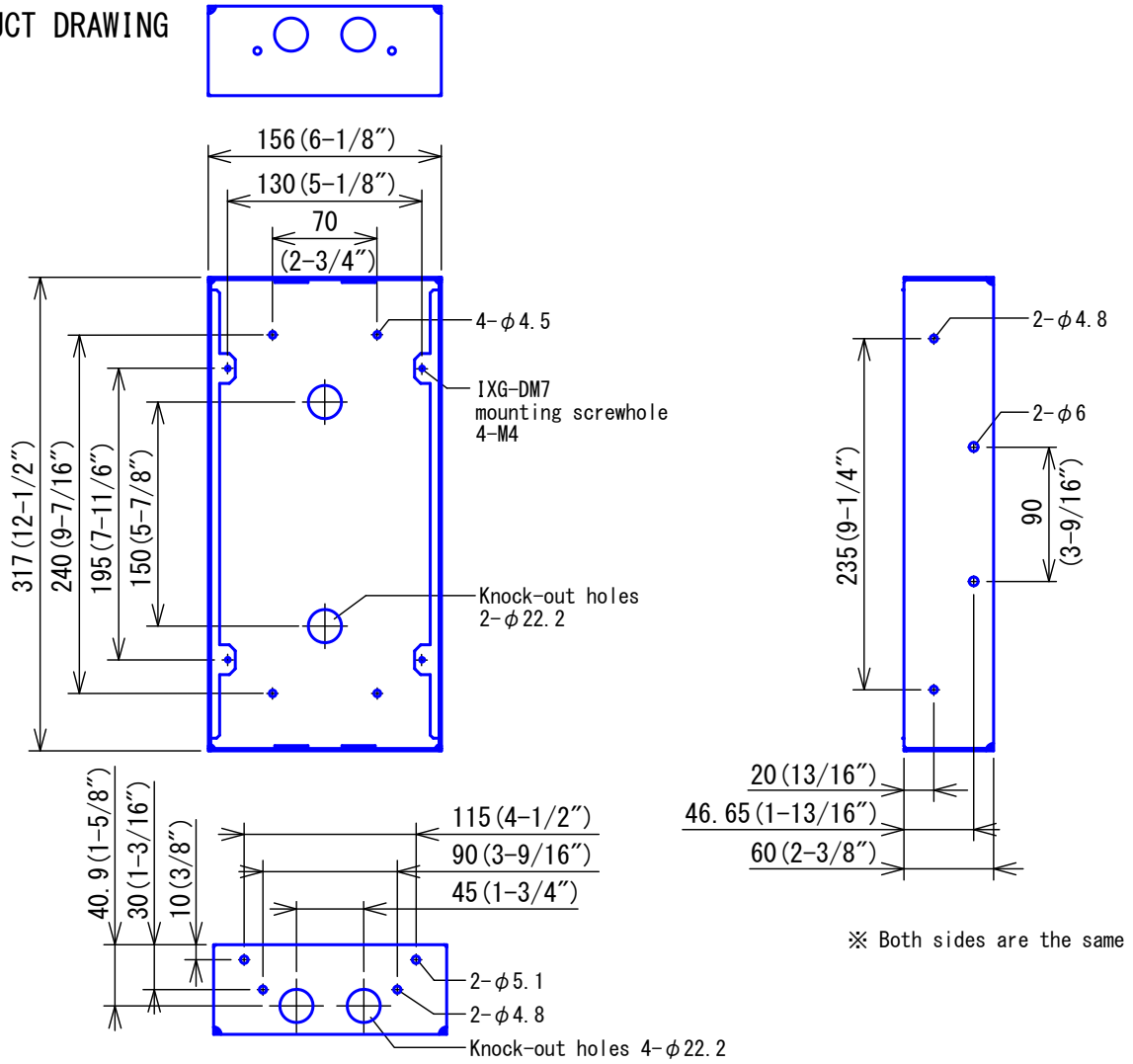
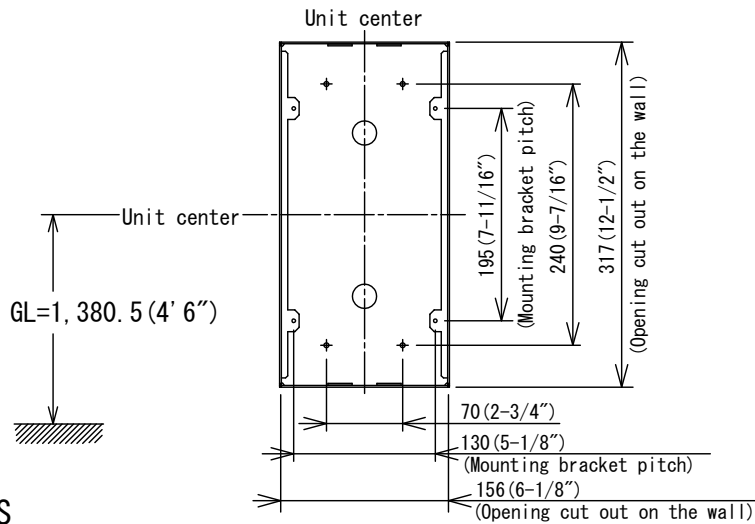


■ PRODUCT DRAWING



● MOUNTING



■ SPECIFICATIONS

| | | | |
|-------------------------------|--------------------------------|------|------------------|
| Mounting | Flush wall-mount | | |
| Material | SPCC t1.6 | | |
| Weight | Approx. 1.5kg (3.3 lbs) | | |
| Remarks | Used for: IXG-DM7, IXG-DM7-HID | | |
| DESCRIPTION | FIG. NAME | UNIT | DATE |
| BACK BOX FOR ENTRANCE STATION | PRODUCT DRAWING/SPEC. | mm | 7 February, 2020 |
| MODEL NO. | FIG. NO. | PAGE | REVISION |
| IXG-DM7-BOX | 156777-1-1 | 1/1 | 1 |

AIPHONE